

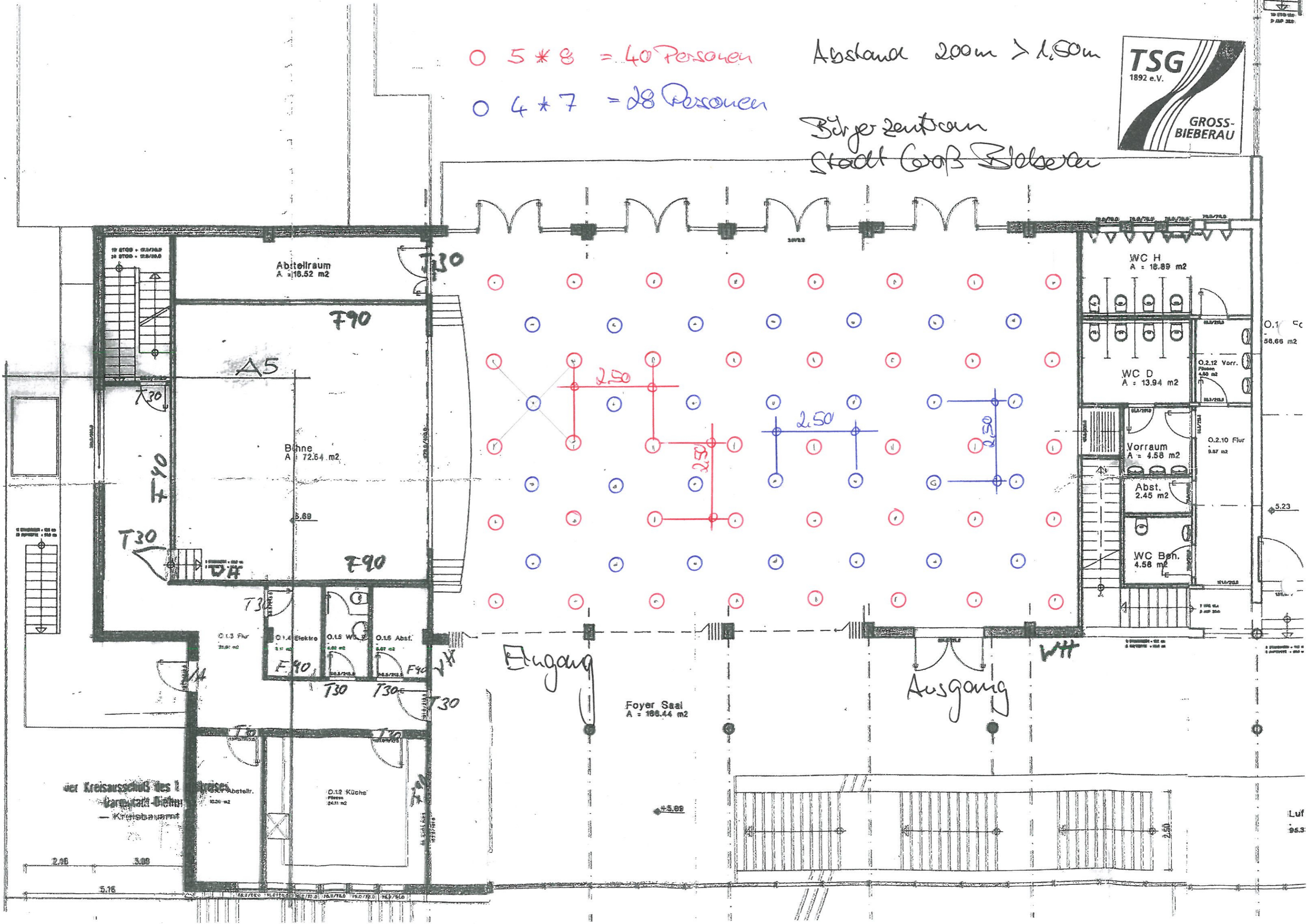
○ 5 * 8 = 40 Personen

○ 4 * 7 = 28 Personen

Abstand 200cm > 1,50m



Bürgerzentrum
Stadt Groß Bieberau



Eingang

Ausgang

Foyer Saal
A = 106.44 m2

Abstellraum
A = 16.52 m2

F90

A5

Bühne
A = 72.64 m2

F90

F90

WC H
A = 16.89 m2

WC D
A = 13.94 m2

Vorraum
A = 4.58 m2

Abst.
2.45 m2

WC Beh.
4.58 m2

0.13 Flur

0.14 Elektro

0.15 WC

0.16 Abst.

F90

F90

Der Kreisabschluss des ...
Vergangenheit ...
Kreislauf ...

0.12 Küche
24.11 m2

2.98 3.08

5.16

+5.02

Luf
95.3